



New County Facilities & Projects



Cameron County Port Isabel Annex

**Completed
2007**





**CAMERON
COUNTY
San Benito Annex**

Completed 2007

**CAMERON
COUNTY
Harlingen Annex**

Completed 2008



NEWLY PROPOSED LOS FRESNOS ANNEX

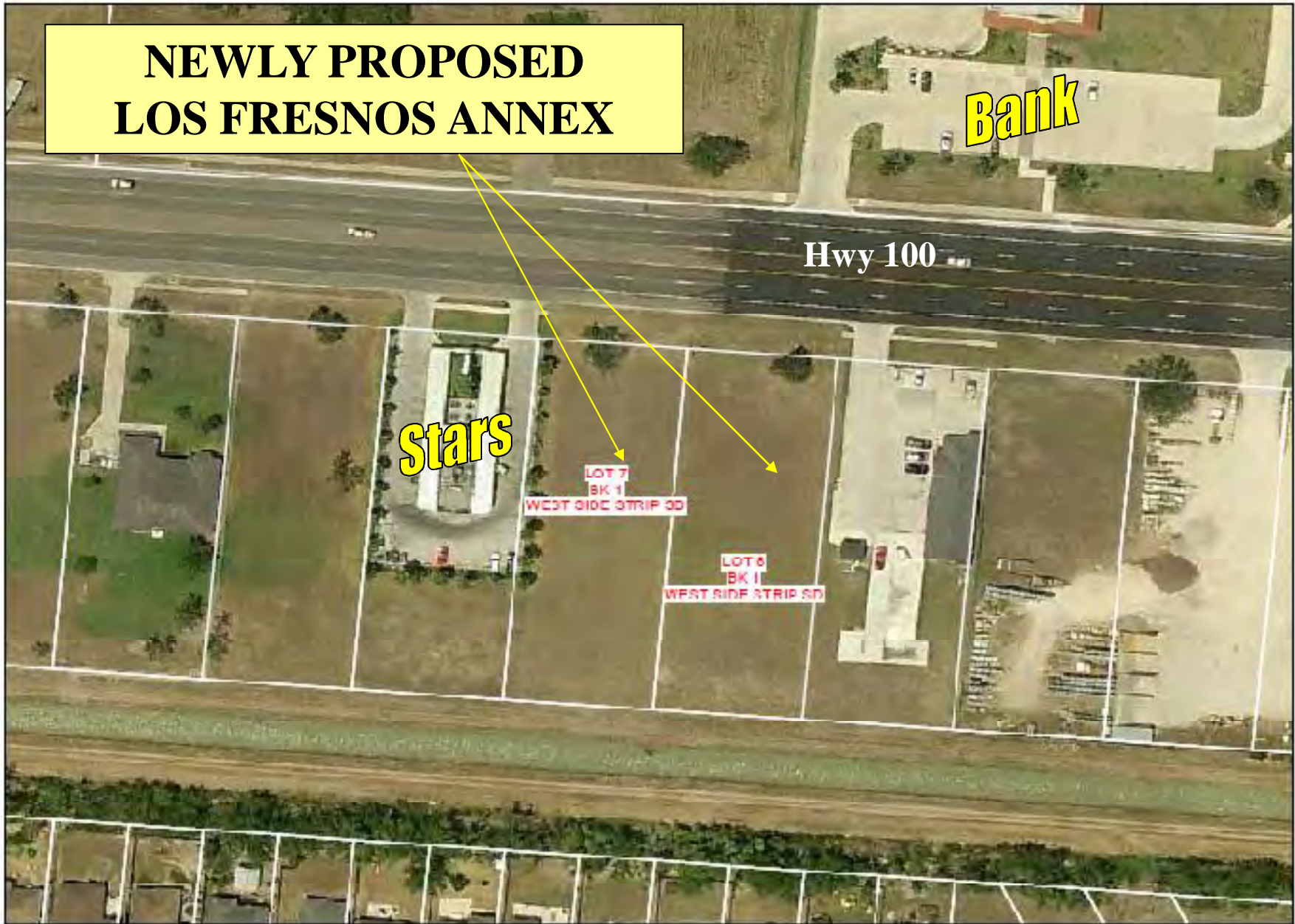
Bank

Hwy 100

Stars

LOT 7
BK 1
WEST SIDE STRIP SD

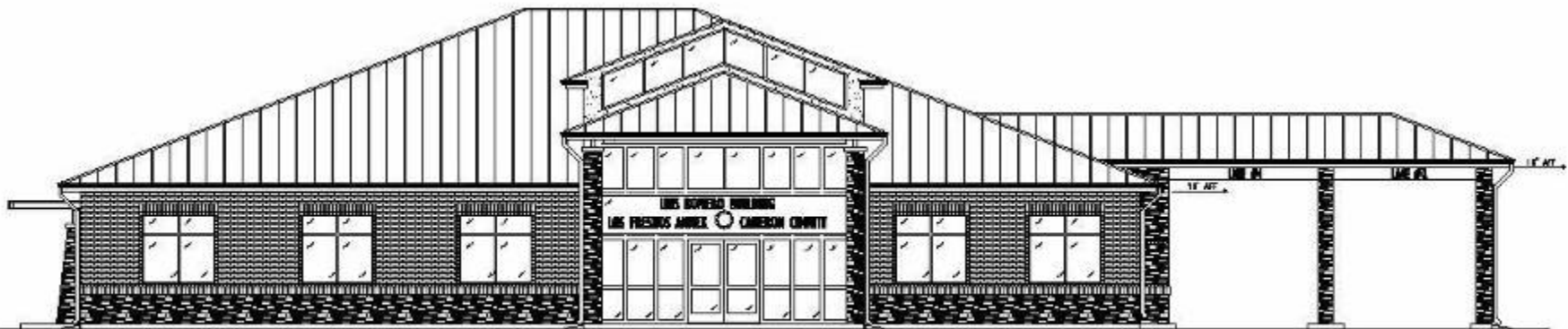
LOT 8
BK 1
WEST SIDE STRIP SD



EXTERIOR VIEW



REAR ELEVATION



FRONT ELEVATION

6,454 sq ft

FLOOR LAYOUT

