



July 20, 2013

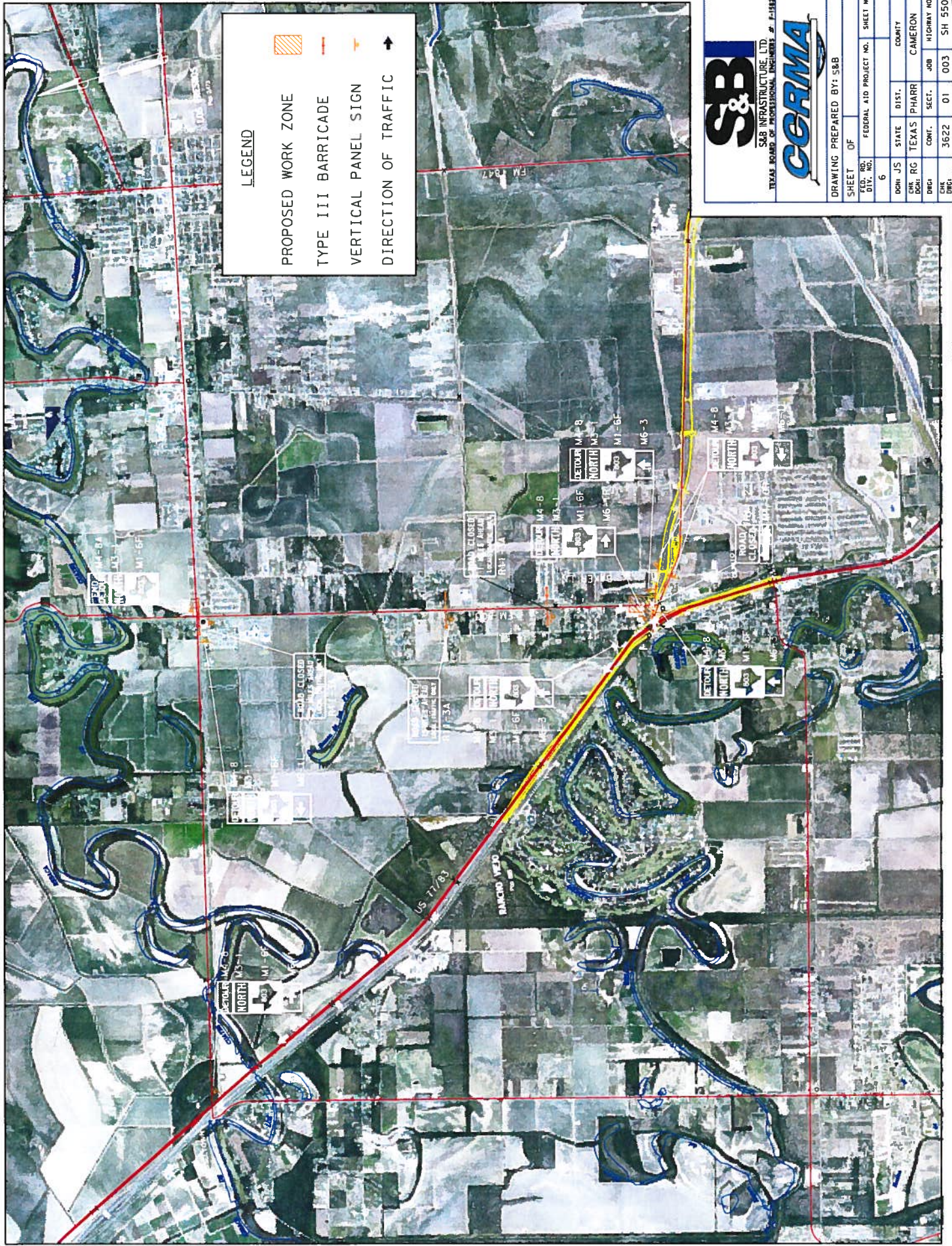
**POC: Pete Sepulveda, Jr.
956-459-6683**

**THE CAMERON COUNTY REGIONAL MOBILITY AUTHORITY TO CLOSE
FM 803 IN THE VICINITY OF THE SH 550 DIRECT CONNECTOR PROJECT**

The Cameron County Regional Mobility Authority (CCRMA) will close FM 803 from SH 100 to SH 550 to through traffic starting on Monday July 22, 2013 for approximately two weeks due to Construction. A temporary Detour will be implemented as per the attached map. Local traffic (residents) will still be able to utilize FM 803 in this area. Anderson Columbia is the Prime Contractor completing the work.

The overall Project consists of the construction of Direct Connectors and tolled lanes on SH 550 from U.S. 77/83 to 0.53 miles east of Old Alice Road.

If you have any questions or require any other information, feel free to contact Mr. Pete Sepulveda, Jr., RMA Coordinator with the CCRMA at 956-459-6683 or Mr. Phillip J. Pawelek with S&B Infrastructure at 956-926-5004.



S&B
SAB INFRASTRUCTURE, LTD.
TEXAS BOARD OF PROFESSIONAL ENGINEERS # 15184

CERMA

DRAWING PREPARED BY: S&B

SHEET NO.	FEDERAL AID PROJECT NO.	SHEET NO.
6		
DIST.	STATE	COUNTY
PHARR	TEXAS	CAMERON
CONTRACT NO.	SECTION	JOB
3622 01	003	SH 550