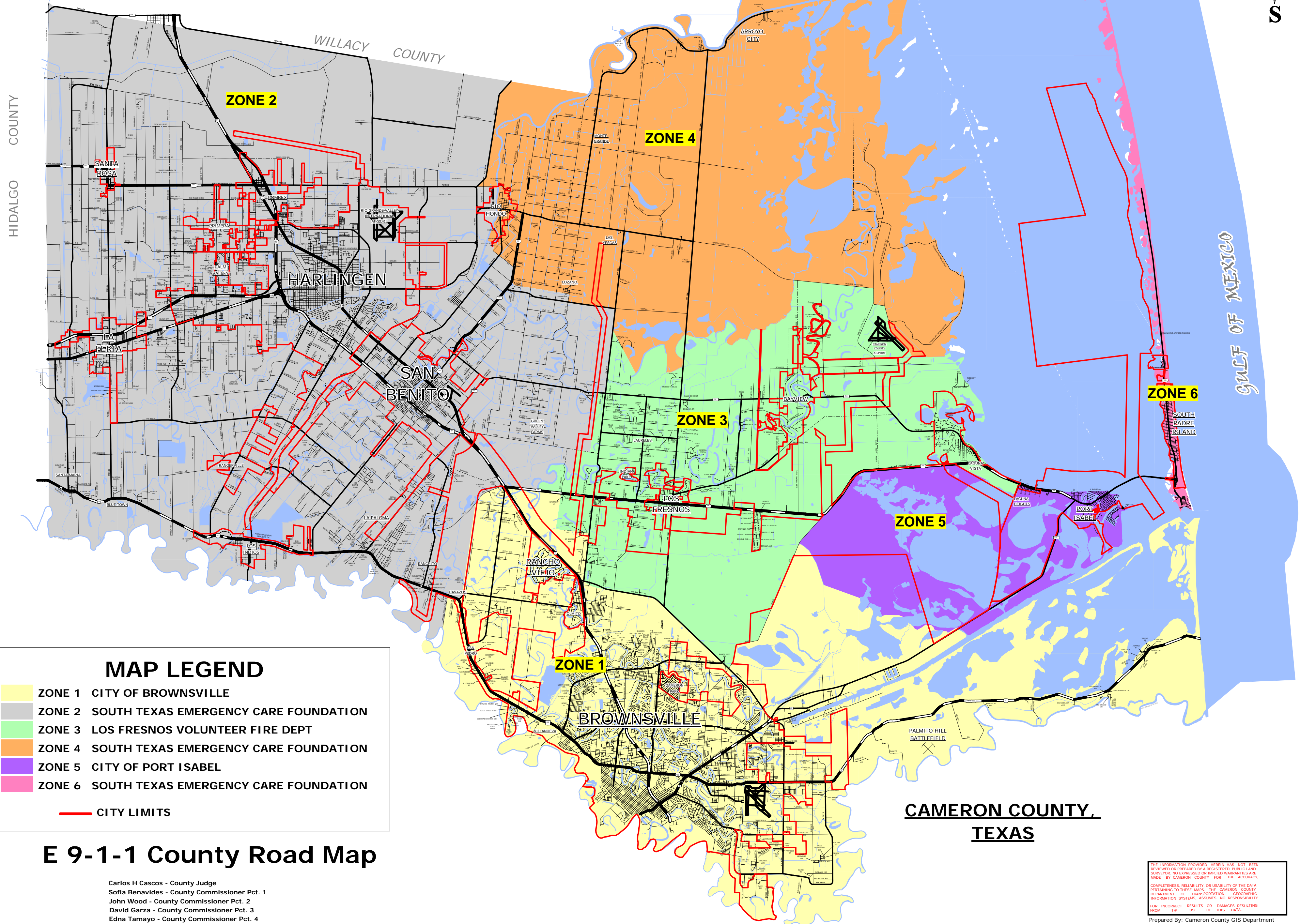
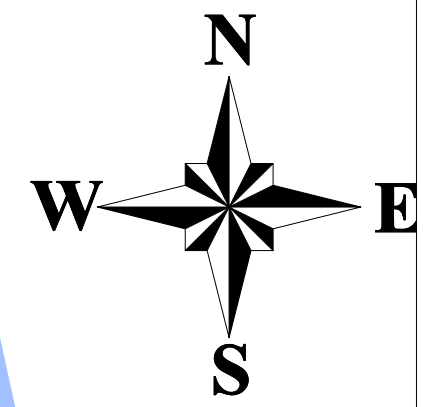


ESD AMBULANCE

ZONE MAP



MAP LEGEND

- ZONE 1 CITY OF BROWNSVILLE
- ZONE 2 SOUTH TEXAS EMERGENCY CARE FOUNDATION
- ZONE 3 LOS FRESNOS VOLUNTEER FIRE DEPT
- ZONE 4 SOUTH TEXAS EMERGENCY CARE FOUNDATION
- ZONE 5 CITY OF PORT ISABEL
- ZONE 6 SOUTH TEXAS EMERGENCY CARE FOUNDATION
- CITY LIMITS

E 9-1-1 County Road Map

Carlos H Cascos - County Judge
 Sofia Benavides - County Commissioner Pct. 1
 John Wood - County Commissioner Pct. 2
 David Garza - County Commissioner Pct. 3
 Edna Tamayo - County Commissioner Pct. 4

**CAMERON COUNTY,
TEXAS**

THE INFORMATION PROVIDED HEREIN HAS NOT BEEN REVIEWED OR PREPARED BY A REGISTERED PUBLIC LAND SURVEYOR. NO EXPRESSED OR IMPLIED WARRANTIES ARE MADE BY CAMERON COUNTY FOR THE ACCURACY, COMPLETENESS, RELIABILITY, OR USABILITY OF THE DATA PERTAINING TO THESE MAPS. THE CAMERON COUNTY DEPARTMENT OF TRANSPORTATION, GEOGRAPHIC INFORMATION SYSTEMS, ASSUMES NO RESPONSIBILITY FOR INCORRECT RESULTS OR DAMAGES RESULTING FROM THE USE OF THIS DATA.

Prepared By: Cameron County GIS Department
 Plot Date: 06/APRIL/2009