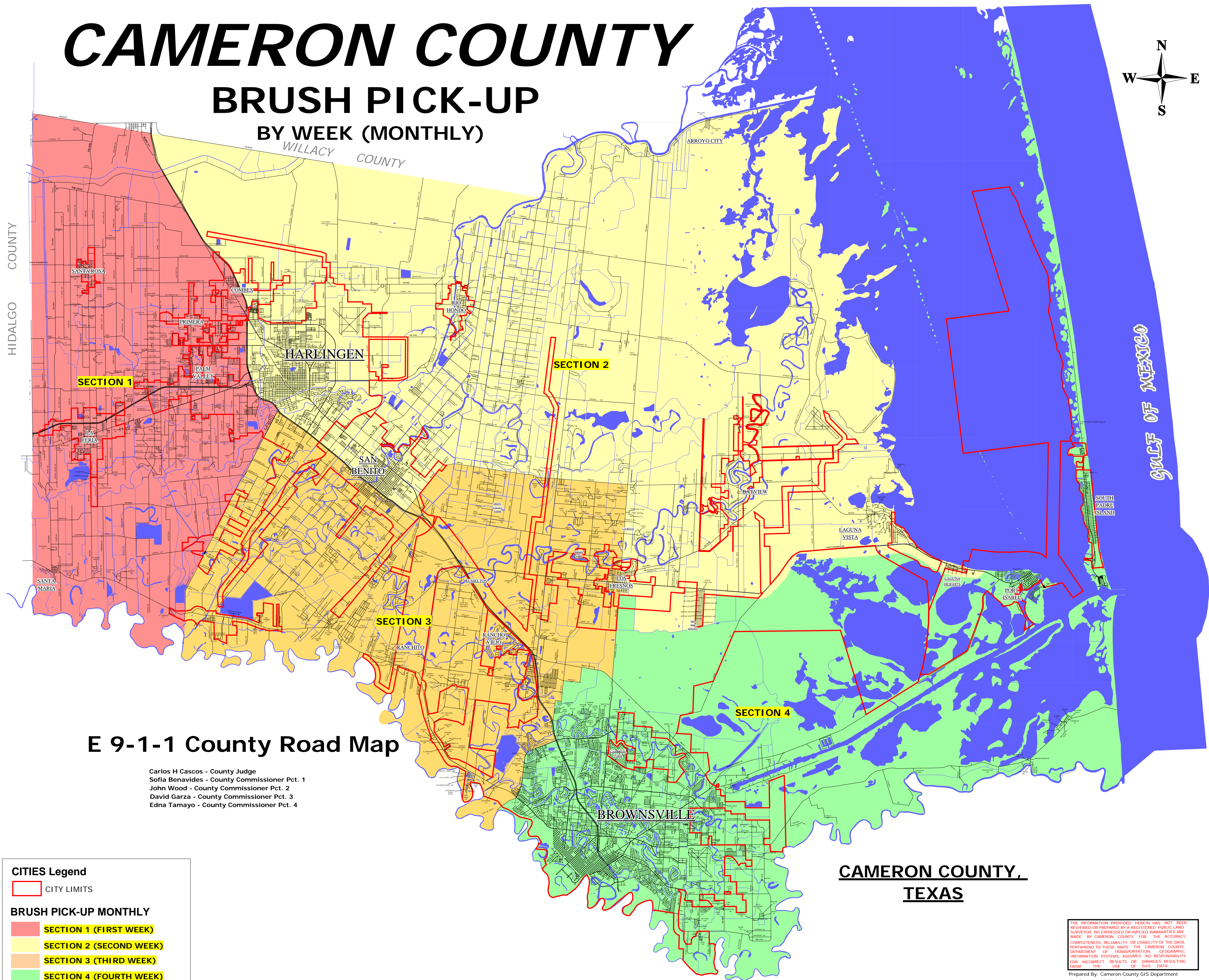
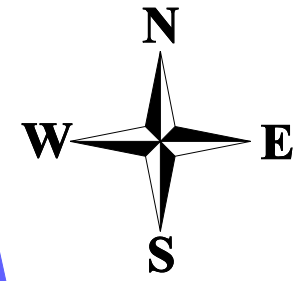


CAMERON COUNTY

BRUSH PICK-UP

BY WEEK (MONTHLY)



E 9-1-1 County Road Map

Carlos H Cascos - County Judge
Sofia Benavides - County Commissioner Pct. 1
John Wood - County Commissioner Pct. 2
David Garza - County Commissioner Pct. 3
Edna Tamayo - County Commissioner Pct. 4

CITIES Legend
[Red outline] CITY LIMITS

BRUSH PICK-UP MONTHLY

- [Red] SECTION 1 (FIRST WEEK)
- [Yellow] SECTION 2 (SECOND WEEK)
- [Orange] SECTION 3 (THIRD WEEK)
- [Green] SECTION 4 (FOURTH WEEK)

**CAMERON COUNTY,
TEXAS**

THE INFORMATION PROVIDED HEREIN HAS NOT BEEN REVIEWED OR PREPARED BY A REGISTERED PUBLIC LAND SURVEYOR. NO EXPRESSED OR IMPLIED WARRANTIES ARE MADE BY CAMERON COUNTY FOR THE ACCURACY, COMPLETENESS, RELIABILITY, OR USABILITY OF THE DATA PERTAINING TO THESE MAPS. THE CAMERON COUNTY DEPARTMENT OF TRANSPORTATION, GEOGRAPHIC INFORMATION SYSTEMS, ASSUMES NO RESPONSIBILITY FOR INCORRECT RESULTS OR DAMAGES RESULTING FROM THE USE OF THIS DATA.

Prepared By: Cameron County GIS Department
Plot Date: 10/SEPT./2008