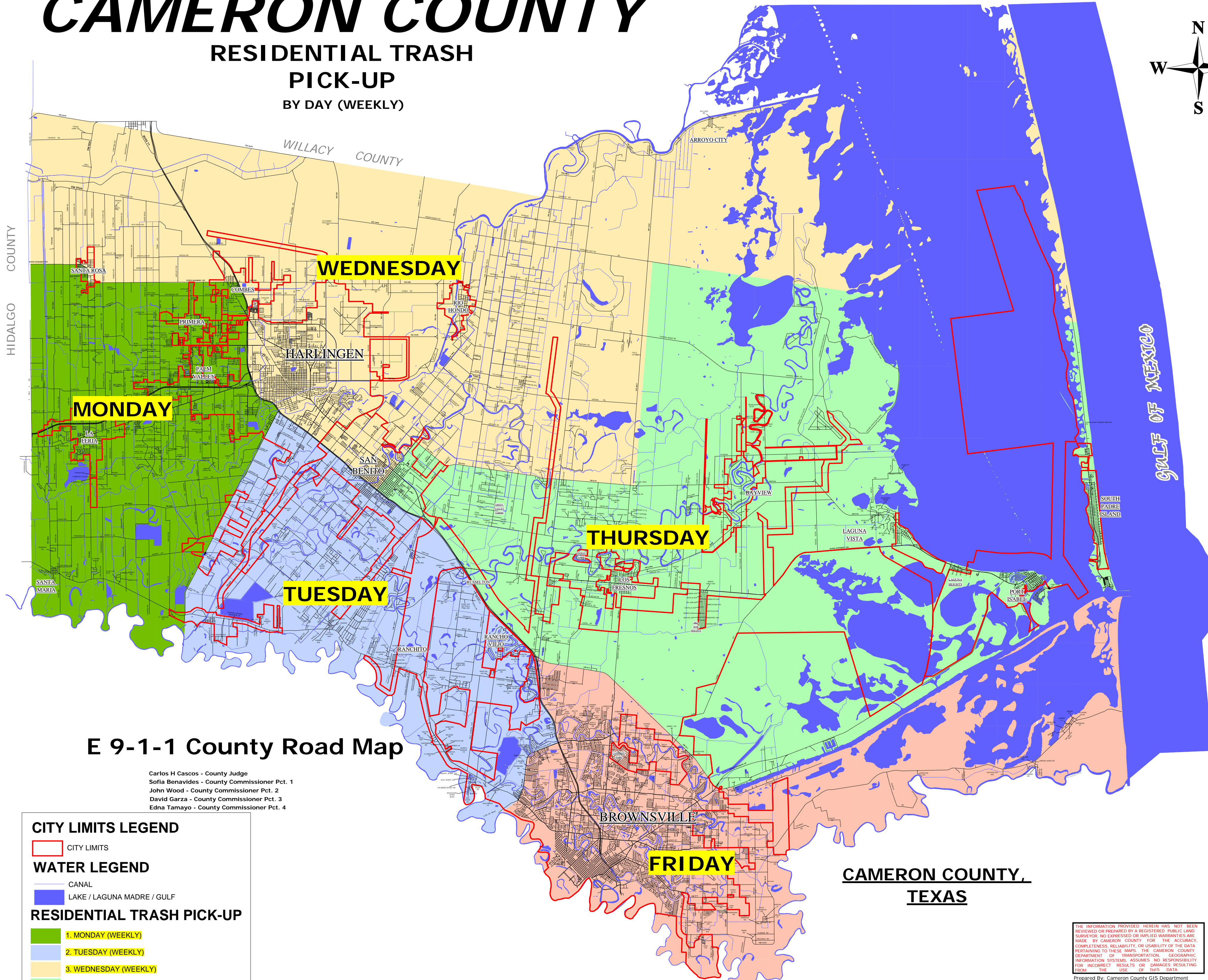
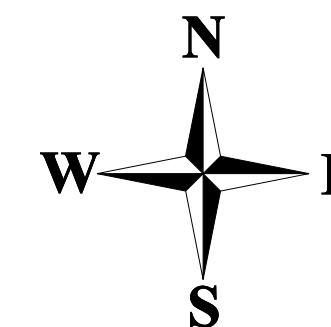


# CAMERON COUNTY

## RESIDENTIAL TRASH

### PICK-UP BY DAY (WEEKLY)



**MONDAY**

**WEDNESDAY**

**THURSDAY**

**TUESDAY**

**FRIDAY**

GULF OF MEXICO

### E 9-1-1 County Road Map

Carlos H Cascos - County Judge  
Sofia Benavides - County Commissioner Pct. 1  
John Wood - County Commissioner Pct. 2  
David Garza - County Commissioner Pct. 3  
Edna Tamayo - County Commissioner Pct. 4

**CITY LIMITS LEGEND**

CITY LIMITS

**WATER LEGEND**

CANAL

LAKE / LAGUNA MADRE / GULF

**RESIDENTIAL TRASH PICK-UP**

1. MONDAY (WEEKLY)

2. TUESDAY (WEEKLY)

3. WEDNESDAY (WEEKLY)

4. THURSDAY (WEEKLY)

5. FRIDAY (WEEKLY)

**CAMERON COUNTY,**  
**TEXAS**

THE INFORMATION PROVIDED HEREIN HAS NOT BEEN REVIEWED OR PREPARED BY A REGISTERED PUBLIC LAND SURVEYOR. NO EXPRESSED OR IMPLIED WARRANTIES ARE MADE BY CAMERON COUNTY FOR THE ACCURACY, COMPLETENESS, RELIABILITY, OR USABILITY OF THE DATA PERTAINING TO THESE MAPS. THE CAMERON COUNTY DEPARTMENT OF TRANSPORTATION GEOGRAPHIC INFORMATION SYSTEMS ASSUMES NO RESPONSIBILITY FOR INCORRECT RESULTS OR DAMAGES RESULTING FROM THE USE OF THIS DATA.

Prepared By: Cameron County GIS Department  
Plot Date: 10/SEPT./2008